

# Assembly Instructions For Z-Scale Studebaker US6 2 ½ ton Cargo Truck

**WARNING: CHOKING HAZARD**  
Keep out of reach of small  
children!



Note that these ARE NOT TOYS,  
AND ARE NOT INTENDED FOR  
USE BY CHILDREN UNDER  
AGE OF 14. These products are  
model railroad equipment and  
accessories intended for use by  
adults.

[www.eaelec.com](http://www.eaelec.com)

Made in Canada

Production of the US6 truck started in 1941 and over 200,000 were built during World War 2. Over 150,000 were exported under the lend-lease program mostly to Russia. The US military used these trucks in the construction of the Burma Road and in North America on the Alcan (Alaska) highway.

Parts Included in the kit:

- A. 3D printed chassis.
- B. 3D printed cab with attached cargo bed
- C. Decals

Required to complete the kit:

Paint - Flat black and flat army olive for US Army (Testors 1165)

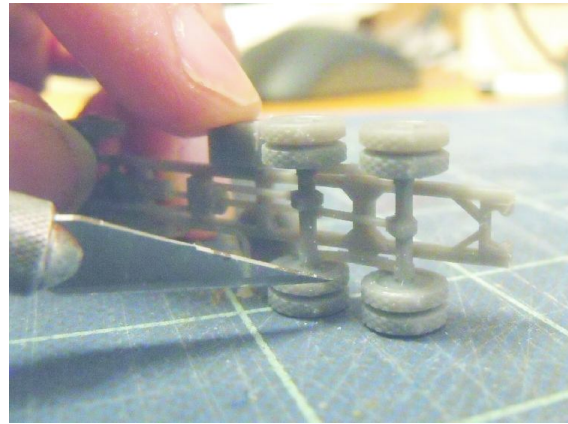
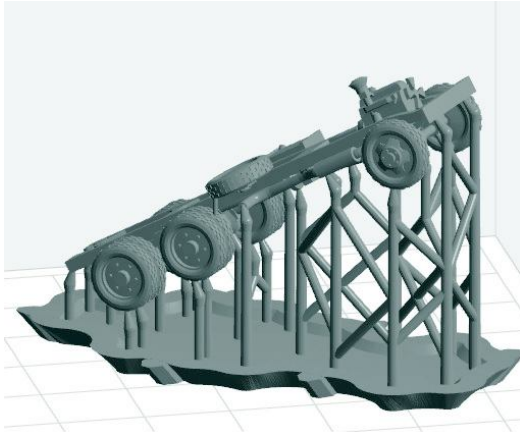
Paint - Flat black and flat army green for Red Army (Humbrol 102 or Revell 45)

Glue - Slow setting CA is best.

Tools Required:

- 1. X-acto knife with a sharp #11 blade.
- 2. #400 and #600 sandpaper.

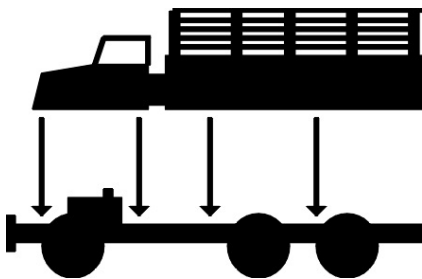
The 3D printing process requires a supporting frame during printing, see below left. The printed part is cut from the frame using flush cutters and this sometimes leaves small bumps on the part. Use a knife with a sharp new blade to cut away the bumps. When trimming bumps off the wheels you should place the wheel on a flat surface as shown below on the right. Putting too much stress on the wheel can cause the axle to break. For bumps on the cab body, sanding is recommended.



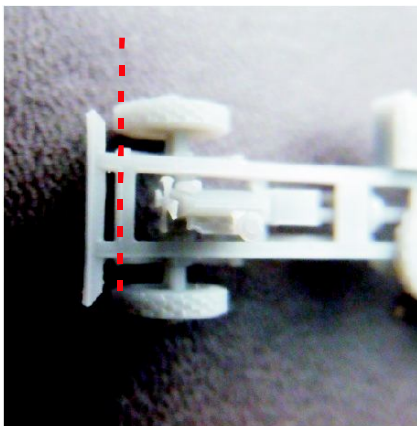
After cleaning up the bumps, paint the both the cab and the cargo bed olive (or green for Red Army) and the entire chassis flat black. Once these have dried paint the wheel hubs, fuel tank and front bumper olive or green using a fine brush. Apply a coat of gloss to the cab, let dry and then place the decals as show below. After the decals are completely dry, apply dullcoat to the cab.

When everything is dry, glue the cab and the cargo bed onto the chassis using CA glue. See photo below for cab alignment.

### Final Assembly



When gluing the cab to chassis, front of the cab should extend to red line



[www.eaelec.com](http://www.eaelec.com)

### Painting Guide & Decal Placement (US Army)

### Painting Guide & Decal Placement (Red Army)