



Relay Cabinet Kit for Model Railroads

www.eaelec.com

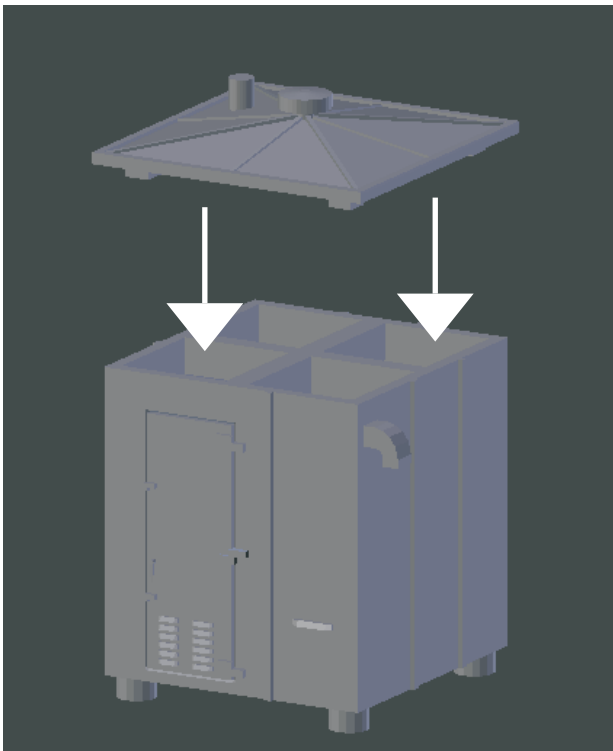
Made in Canada

WARNING

Note that these ARE NOT TOYS, AND ARE NOT INTENDED FOR USE BY CHILDREN UNDER AGE OF 14. These products are model railroad equipment and accessories intended for use by adults.

Instructions

Glue the roof of the cabinet to the base part using CA glue as shown below. After glue is dry spray paint the entire unit silver.



www.eaelec.com
Made in Canada